

To All of Our Old and New Customers,



Christine Doherty
Owner



Dan Korn
Owner

We are pleased to introduce our new 2009 Full Line Beverage Catalog. It may also be viewed online at www.RochesterStoreFixture.com. Steve Mancini, formerly of A.D.M. Amalgamation, has brought his knowledge and expertise in the beverage industry to Rochester Store Fixture. RSF started in 1938 and is now a third generation business owned and operated by Daniel Korn and his sister Christine Doherty. Our company motto is "your satisfaction is our future", and it is our commitment to you. We have what you need and the advice to make sure you are purchasing the correct item. We offer a full selection of equipment, small wares and parts for beverage and food service equipment.

We stand ready to offer the best value on products, along with experienced service. We look forward to working with you.

The Staff of Rochester Store Fixture



707 NORTH STREET
ROCHESTER, NY 14605

TOLL FREE
800-821-0114
MON - FRI 8:30 AM to
5:00 PM EASTERN
TIME

FAX 585-546-4452

Prices Subject To Change Without Notice

Rochester Store Fixture, Inc. Terms/Conditions/Ordering Information

HOW TO ORDER: Call us at 800-821-0114, or locally at 585-546-6706. Sales persons are available from 8:30 AM to 5:00 PM Eastern time, Monday through Friday. Our fax number (available 24 hours a day, 7 days a week) is 585-546-4452. E-mail addresses will be posted at our website at www.RochesterStoreFixture.com.

PRICES & TERMS: Your net cost is shown for every item in this catalog. Customer pays shipping charges from point of shipment. Manufacturers reserve the right to improve their products and change specifications without notice. If purchaser has not been previously approved by our Credit Department, orders can be shipped COD or charged to MasterCard or Visa. Our low pricing policy requires payment with an order on large or special order equipment. **All prices subject to change without notice.**

WARRANTIES:

Parts: All merchandise shown is offered as free of defects in materials and workmanship.

Equipment: We have listed the manufacturer's warranty wherever possible. There are no warranties, express or implied, by RSF, and no oral representation shall serve to modify the terms of sale. RSF however, will make a good faith effort to work with the customer and the manufacturer in the event the product proves to be defective within the manufacturer's warranty period.

PRODUCT SUITABILITY: Before ordering heavy equipment, check measurements and specifications carefully to be sure units will pass through doorways, go around corners, navigate stairways, etc. Customer must assume responsibility for this. Only you can determine if units can be installed upon arrival. RSF cannot be responsible for how a product is installed or used. Before purchase and use of a product, please review the product application as well as state and local codes and regulations, and be sure that the product, installation and use will comply.

RETURNS: Our approval is required before making returns. The customer is responsible for shipping both ways unless it is a vendor error.

Parts: A 20% restocking fee will be charged for returns made for any reason other than our error. No returns on special order parts.

Equipment: The return of direct shipped or special order merchandise is subject to the prior approval and returned goods policy of the manufacturer. All items must be shipped prepaid, within 30 days from date of shipment, in original packing, and are subject to inspection before a credit will be issued. Unauthorized returns will not be credited. Replacement items will be charged to the customer if defective items are not returned.

Freight and Shipping Information

SHIPPING: Most items in this catalog are shipped from our stock, Rochester, NY unless otherwise noted.

UPS-FedEx: We ship via U.P.S. or Fedex if items do not exceed their limits. Shipping, handling and insurance charges will be added to customer's invoice. There is an additional fee for COD shipments. Payment must be made by certified check or money order.

FREIGHT: Items too large to be shipped via U.P.S. or Fedex will be shipped by a freight company. We will be happy to provide you with an estimate of freight charges. All freight shipping and handling charges will be prepaid and added to customer's invoice or shipped freight collect.

UPS/FedEx/FREIGHT DAMAGE: The customer is responsible for inspecting and unloading shipments. When carrier accepts merchandise he assumes responsibility for safe delivery. **DO NOT SIGN** for shipments until you are satisfied that there is no apparent damage or shortage. Any problems must be noted on the shipping receipt with the driver and reported to Rochester Store Fixture immediately. **SAVE ALL SHIPPING MATERIALS FROM ANY DAMAGED SHIPMENT.** If there is concealed damage, notify the shipper within five days and request an inspection. All freight claims are the customer's responsibility. We will assist you upon request.



New!! Pumps with Brass Shafts & Steel Shafts

Back by popular demand. We are proud to offer two styles of metal pumps.

New! Pumps with Brass Shafts end in -bs have a 5/16" thick unplated brass diameter shaft, piston ass'y with two interlocking halves and 1-1/4" diameter hand knob

Pumps with Chrome Steel Shafts end in -cs and feature 3/8" thick chrome plated steel diameter shaft, one piece piston ass'y and a 1-3/8" diameter hand knob (with same threads as a standard faucet knob)

New!!



#234-MAXI-BS
Heavy duty nickel plated brass pump with metal top and bottom cap and brass rod. Approximately 1 5/8" outer diameter by 4 3/4" tall cylinder approx. 8" tall overall.



#234-TALL-BS
Heavy duty nickel plated brass pump with metal top and bottom cap and brass rod. Approximately 1 5/8" outer diameter by 8 1/4" tall cylinder approx. 11-1/2" tall overall.



#234-MAXI-CS
Heavy duty nickel plated brass pump with metal top and bottom cap and chrome steel rod. Approximately 1 5/8" outer diameter by 4 5/16" tall cylinder approx. 7-3/4" tall overall.



#234-TALL-CS
Heavy duty nickel plated brass pump with metal top and bottom cap and chrome steel rod. Approximately 1 3/4" outer diameter by 8 1/4" tall cylinder approx. 11-3/4" tall overall.

#234-MAXI-BS
1-11 \$16.75 12-24 \$15.75 25-UP \$14.75

#234-TALL-BS
1-11 \$17.25 12-24 \$16.25 25-UP \$15.25

#234-MAXI-CS
1-11 \$16.95 12-24 \$15.95 25-UP \$14.95

#234-TALL-CS
1-11 \$18.75 12-24 \$17.75 25-UP \$16.75

Parts for Pumps with Chrome Steel Shafts end in -cs and parts for Pumps with Brass Shafts end in -bs



Five reasons why our pump assemblies are the best you can buy:

No.	Part#*	Description	1-24	25-UP
1	235KS	Knob for 234-MAXI, 234 & 235	\$1.85	\$1.65
2	235CBS	Metal cap for 234-MAXI, 234 & 235	2.50	2.30
3	235SBS	Spring for 234-MAXI, 234 & 235	.90	.80
4	235PSBS	Pump shaft for 234, 235	3.77	3.57
4	235PS-MBS	Pump shaft for 234-MAXI	3.77	3.57
5	235PBS	2 pc. piston & nut as'y for -BS	2.95	2.85
6	OS-235R**	Oversize "O" ring for all	.70	.60
7	234MBT	Barrel w/threaded base for 234	11.65	11.25
7	234MBT-M	Barrel w/threaded base for 234-MAXI	11.65	11.25
7	235MBB	Barrel w/hose barb for 235	11.65	11.25
8	753	Bottom washer for all	.25	.21
9	23	Thomas valve for 234-MAXI, 234	.30	.27

* Parts ending in "BS" above are for pumps with brass 5/16" thick shaft. The parts ending in "CS" below are for pumps with chrome steel 3/8" thick shaft. The **OS-235R also fits Banner and MicroMatic metal pumps.

No.	Part#	Description	1-24	25-UP
1	1300R	Knob for 234-MAXI, 234 & 235	\$1.85	\$1.65
3	235SCS	Spring for 234-MAXI, 234 & 235	.90	.80
5	235PCS	1 pc. piston & nut as'y for -CS	2.95	2.86

- Easier to use:** The pumps on this page have 3 feet of black beer tubing so you can tap & pour a 1/4 keg without bending over (most pumps usually have only 2 feet),
- Better performance:** 3 feet of black 3/16" hose is closer to balancing the pressure of a new keg than is 2 feet of hose. Less foaming occurs when keg is first tapped. Can be special ordered with 4 feet of black beer line at no extra charge for ideal brewery recommended balance
- More durable:** We clamp the beer line to the pump coupler to prevent the beer line from ripping off.
- Easier to repair:** Our pumps use an external replacement check valve that can be replaced in seconds. No tricky star washers to remove or replace. No digging out deep check valves.
- Easier to pump:** External replacement check valves have a larger opening and restrict air less, allowing more air flow per stroke.



Extra Thick Oversize "O" Rings for Metal Pumps. Same outer diameter but about 30% thicker for better contact with metal surface & piston. Sometimes works when others won't anymore
#ETOS-235R\$1.50/each



Wing Handle US Sankey Pumps.

Fit 1/6, 1/4 and 1/2 size kegs

New! polymer plastic wing handles are tougher and stronger!!



#ESP211-MAXI-BS U.S. Sankey plastic wing handle pump with #234-MAXI-BS SHORT METAL PUMP with brass shaft.

1-11	12-24	25-UP
\$35.95	\$31.95	\$30.95

#ESP211-MAXI-BS



#ESP211-M-BS U.S. Sankey plastic wing handle pump with #234-TALL-BS METAL PUMP with brass shaft.

1-11	12-24	25-UP
\$37.95	\$33.95	\$32.95

#ESP211-M-BS



#ESP211-MAXI-CS U.S. Sankey plastic wing handle pump with #234-MAXI-CS SHORT METAL PUMP with brass shaft.

1-11	12-24	25-UP
\$37.95	\$33.95	\$32.95

#ESP211-MAXI-CS



#ESP211-M-CS U.S. Sankey plastic wing handle pump with #234-TALL-CS METAL PUMP with chrome steel shaft.

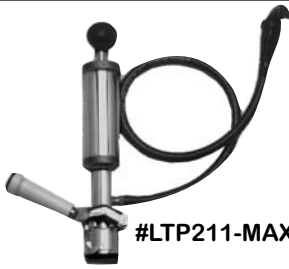
1-11	12-24	25-UP
\$39.95	\$35.95	\$34.95

#ESP211-M-CS

To upgrade to metal wing handle couplers at an added cost of \$3.50 (add suffix "-MH" to part number)

Lever Handle US Sankey Pumps

Fit 1/6, 1/4 and 1/2 size kegs



#LTP211-MAXI-BS U.S. Sankey lever handle pump with #234-MAXI-BS SHORT METAL PUMP with brass shaft.

1-11	12-24	25-UP
\$37.95	\$33.95	\$32.95

#LTP211-MAXI-BS



#LTP211-M-BS U.S. Sankey lever handle pump with #234-TALL METAL PUMP with brass shaft.

1-11	12-24	25-UP
\$39.95	\$35.95	\$34.95

#LTP211-M-BS



#LTP211-MAXI-CS U.S. Sankey lever handle pump with #234-MAXI-CS SHORT METAL PUMP with chrome steel shaft.

1-11	12-24	25-UP
\$39.95	\$35.95	\$34.95

#LTP211-MAXI-CS



#LTP211-M-CS U.S. Sankey lever handle pump with #234-TALL METAL PUMP with chrome steel shaft.

1-11	12-24	25-UP
\$41.95	\$37.95	\$36.95

Lever Handle European Sankey Pumps

#LTR211-M-BS European Sankey lever handle pump with #234-TALL-BS METAL PUMP with brass shaft.

1-11	12-24	25-UP
\$43.95	\$39.95	\$38.95

#LTR211-M-CS European Sankey lever handle pump with #234-TALL-CS METAL PUMP with chrome steel shaft.

1-11	12-24	25-UP
\$45.95	\$41.95	\$40.95

#LTR211-M-CS



#LTR211-MAXI-BS

#LTR211-MAXI-BS European Sankey lever handle pump with #234-MAXI-BS SHORT METAL PUMP with brass shaft.

1-11	12-24	25-UP
\$41.95	\$37.95	\$36.95

#LTR211-MAXI-CS European Sankey lever handle pump with #234-MAXI-CS SHORT METAL PUMP with chrome steel shaft.

1-11	12-24	25-UP
\$43.95	\$39.95	\$38.95

Twin Probe Pumps

Twin Probe Pump assemblies feature reconditioned PT-1 coupler, new pump, new plastic faucet and new tubing.

MIX 'n' MATCH Pumps for Quantity Discount



#EP211-MAXI

Part#	Description	1-5	6-UP
EP211-MAXI	w/234-MAXI pump	\$29.95	\$26.95

Universal Picnic Pumps



Swivel hex nuts at bottom thread onto any keg coupler. Air line connects to air inlet on CO2 Keg coupler(see pages 18-20)

#UN-234MAXI
\$23.95

Import Picnic Pumps



#DS-234MAXI

Complete assemblies feature low cost alternative to deluxe pumps above. Include pressure relief valves and metal coupler handles.

Model#	Coupler/Pump	Cost
BC-234MAXI	BC100DSI/234-MAXI	\$69.95
GC-234MAXI	GC100DSI/234-MAXI	69.95
DS-234MAXI	DS100DSI/234-MAXI	69.95

Great LOW Prices!



#PT-1 Reconditioned Hoff-Stevens picnic pump coupler with S/S probes
1-5 \$15.95 6-UP \$14.95

Reconditioned Twin Probe Pump Couplers Have Been Cleaned, Sanitized and have new gaskets. They are in excellent condition.



See Page 18 for used Twin Probe CO2 couplers

NOTE: Twin Probe Pumps and twin probe pump couplers are in good working order when sold. As most breweries are converting to U.S. Sankey type kegs twin probes CANNOT Be Returned For Credit.



If you have pumps with internal check valves that cannot be replaced with an external check valve, we would like to offer the tools and parts pictured here which will help to simplify the often tricky task of replacing internal check valves.



1 #430-TOOL Used to seat star washers into place. Approximately 6" long

\$.95

2 #430Z Star Retaining Washer for check valve on Banner/MicroMatic style pumps

1-24 \$.95 25-UP \$.85

3 #430Y Check Valve for Banner & older MicroMatic style pumps with internal checks

1-24 \$.95 25-UP \$.85

4 #102-117 Internal check valve for newer MicroMatic style pumps

1-24 \$.95 25-UP \$.85

	#303A Plastic faucet head only 1-11 \$2.35 12-99 \$1.95 100-UP \$1.85
	#303B Plastic faucet head and 4 ft. black polyvinyl hose, hex nut and 3/16" nipple, clamp and rubber washer 1-11 \$4.85 12-UP \$4.45
	#303C Plastic faucet head and 4 ft. of black polyvinyl hose 1-11 \$3.45 12-UP \$3.30



"O" Ring Removal Tool gets at the hardest to reach "O" rings, star washers, check valves and other pump and coupler seals

#K4WP "O" Ring Removal Tool \$9.95

Leather Cup Washers #235LCW 1 1/2" \$10.50

#SLD-108 Combination body & probe washer for grabber and slider pump (discontinued) couplers
1-24 \$.99 25-UP \$.89



New! #SLG-14 USDA approved clear grease, Rated to -50 degrees great for picnic pumps 14 oz. cartridge \$8.95



#761 Pump Adapter Converts threaded pumps to 5/16" barb. \$4.50



#FT101L Probe Lubricant, 1 oz. can
1-3 \$3.45 4-UP \$2.90



#580-10 Female beer thread and female standard hand adapter pump thread allows standard hand pumps to be screwed into one side and the other side screws onto the male threads on the air inlet side of keg couplers (see Pages 18-20) Pump mounts an angle. \$4.50



#PPA-1 Universal Picnic Pump Adapter Can be used with any threaded pump (234-MAXI or 234-TALL) and plastic faucet assembly (303C), air line and clamps to make your own universal pump for a standard CO2 coupler (see Pages 18-20). Our staff will be happy to assist you.
1-11 \$10.95 12-UP \$9.95

Picnic Pump Couplers & Parts

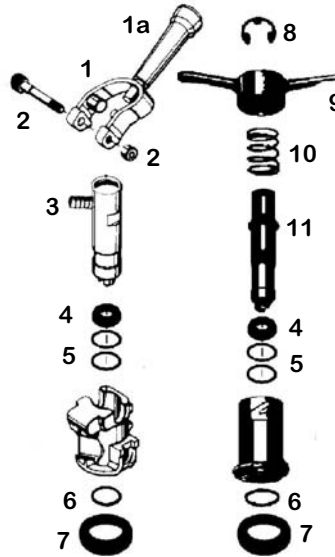


Did you know our Pump Couplers have a larger chamber than the pump couplers of other manufacturers? They accept any pump, accommodating both internal and external check valves style pumps.

All US Sankey pump Couplers fit 1/6, 1/4 and 1/2 kegs

Replacement Parts for Nads/Taprite, Generic Style, Gold Star, Banner and Micromatic Picnic Pump Couplers

No. Part#	Description	1-24	25-UP
1a 55H-S	Short plastic handle sleeve	1.75	N/A
1a 55H-L	Long plastic handle sleeve	1.75	N/A
1 LT-8NAGS	Handle ass'y w/bolt & nut	9.95	N/A
1 GR-110	Handle ass'y Nads/TR	10.50	N/A
2 GR-109	Hinge Pin(Threaded-no nut)	1.65	N/A
2 LT-2A	Handle Bolt & Lock Nut	2.30	N/A
3 1778-2P	*3/16" Straight Barb Fitting	1.85	1.55
3 1778-GS	*3/16"-1/4" Angle Barb	1.85	1.55
3	*Note Barb Fitting Only(does not include probe-NA)		
4 FT-103	U.S. Sankey Probe Seal	.59	.49
4 104	Euro Sankey Probe Seal	1.40	1.20
5 FT-101	Probe "O" Ring(2 required)	.59	.39
6 FT-102	Body internal "O" Ring	.59	.39
7 108	Body Seal	.85	.75
8 FT-114	Handle Retaining Ring	1.19	.99
9 FT-88P	Plastic Wing Handle	3.25	N/A
9 FT-88	Metal Wing Handle	7.95	N/A
10 FT-98	Spring	1.15	1.05
11 45-LR	*Lexan Ring/Spring Support	.95	.85
11 1328	*Snap Ring/Holds Lexan Ring	.59	.49
11	*Note Holds Spring Only(probe not included-NA)		



#SP-1 US Sankey plastic wing handle pump coupler
1-5 6-UP
16.95 15.95



#SP-1MH US Sankey metal wing handle pump coupler
1-5 6-UP
\$20.95 \$19.95



#LTP-1 U.S. Sankey lever handle pump coupler
1-5 6-UP
\$22.95 \$21.95



#LTR-1 European Sankey lever handle pump coupler
1-5 6-UP
\$28.95 \$27.95

Master List (which beers go with which keg couplers)

S=US Sankey
TP=Twin Probe
ES=European Sankey

DS=German Slider Type A (DS-100)
BC=European Type G (BC-100)
GC=European Type U (GC-100)

This list is for reference only. Couplerage may vary by area. Please confirm keg coupler type with your local beer supplier.

AbbotAle.....BC	DogfishHead.....S	Kilkenny.....GC	Portland.....S
Abita(AllBrands).....S	Dos Equis.....S	Killian's Red.....S	Pyramid.....S
Alaskan.....S	Double Diamond.....ES	Labatt's(All Brands).....S	Red Dog.....S
Amstel(All Brands).....ES	EelRiver.....S	Lagunitas.....S	Red Hook.....S
Anchor Steam.....BC	Ellicottville.....S	Lefte.....ES	Red Wolf.....S
AndersonValley.....S	Evil Eye.....TP	LostCoast.....S	Rhino Chasers.....TP
Avery(AllBrands).....S	FatTire.....S	Lowenbrau.....S & ES	Rogue.....S
Ayinger(AllBrands).....DS	Firestone.....S	MadRiver.....S	Rohrbach's.....S
BadFrog.....S	FlyingDog.....S	Matt's.....S & TP	Rolling Rock.....S
Bass Ale.....BC	Foster's.....S	McEwan's.....ES	Sam Adams.....S
BayHawk.....S	FullSail.....S	McSorley's.....TP	Saranac.....S
BBC(AllBrands).....S	Fuller's.....BC	Michael Shea's.....S	Schaeffer.....TP
Beamish/Scottish Newcastle ES	Genesee(All Brands).....S	Michelob(All Brands).....S	Schlitz.....TP
Becks.....ES	GooselIsland.....S	Middle Ages.(All Brands).....S	Scottish Newcastle Brown..ES
Belhaven.....ES	GordonBiersch.....S	Miller.(All Brands).....S	Shipyard.....S
Blue Moon.....S	Grants.....S	Milwaukee's Best.....S	Sierra Nevada.....S
Boddington's.....GC	GreatDivide.....S	Modelo.....S	Smithwick'sIrishAle.....GC
Breckenridge.....S	Grolsch.....BC	Molson(All Brands).....S	South Paw Light.....S
Brooklyn(All Brands).....S	Guinness Harp.....GC	Moosehead.....S	Spaten.....DS
BruinPaleAle.....S	Hacker-Pshorr.....DS	Murphy's Irish Stout.....ES	St. Pauli Girl.....ES
Budweiser(All Brands).....S	Harpoon.....S	NaturalIce(Light).....S	Stella Artois.....ES
Busch(All Brands).....S	Heineken.....ES	New Amsterdam.....TP	Strohs.....S
Caffrey's.....BC	HenryWeinhard's.....S	New Castle Brown Ale.....ES	Strongbow.....ES
Carlsberg.....S	High Falls(All Brands).....S	NorthCoast.....S	Tecate.....S
Cider Jack.....S	Hoegaarden.....DS	O'Doul's.....S	Tennet's.....BC
ClipperCityHeavySeas.....S	Hornsby's.....S	Old Milwaukee.....S	ThomasCreek.....S
ColumbiaBrewing.....S	HudsonValley.....S	Old Speckled Hen.....BC	Warsteiner.....DS
Coors(AllBrands).....S	Humboldt.....S	Old Vienna (OV).....S	Watney's.....BC
Crooked River.....S	Ice House (Miller).....S	Oskar'sBlues.....S	Weinhard's.....S
Custom Brewcrafters.....S	Iron City.....S & TP	Pabst(All Brands).....S	Woodchuck Cider.....S
DAB.....ES	Ithaca(All Brands).....S	Paulaner.....DS	Woodpecker.....ES
Delirium.....DS	John Courage.....ES	Pete's Wicked Ale.....S	Yuengling.....S
DevilMountain.....S	JWDundeeHoneyBrown.....S	PilsnerUrquell.....ES	Zebra.....S

Deluxe Picnic Pumps Feature:
 ✓ Heavy duty metal construction
 ✓ 7 1/4" pump
 ✓ Nickel plated brass faucet
 ✓ Your choice of couplers (see Pages 22-24)

Deluxe Picnic Pumps/Parts/Accessories



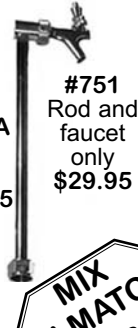
Deluxe Pump Parts



#235 Nickel plated brass pump with 5/8" hose barb for #750 pump (for part breakdown of #235 pump see Page 2)
 1-11 \$16.45 12-UP \$15.75



#750A Rod only \$19.95



#751 Rod and faucet only \$29.95

MIX 'n' MATCH Pumps for Quantity Discount



#780 Clamp Set (two required) for picnic pumps. Complete as pictured.....\$4.25

Part#	Description	1-5	6-UP
750P	Deluxe pump only (no coupler)	\$49.95	\$48.95
752-CH5000-45	US Sankey w/NADS lever handle coupler	76.95	65.95
752-FT86P	US Sankey w/plastic wing handle coupler	75.45	64.45
752-FT86M	US Sankey w/metal wing handle coupler	79.95	68.95
752-FT90P	European plastic wing handle coupler	78.95	67.95
752-CH5100	European Sankey lever handle coupler	78.50	67.50
752-770	Twin probe coupler (S/S probes)	94.95	85.95
752-BC100DSI	European type "G" bass ale coupler	98.95	89.95
752-DS100DSI	European type "A" German specialty coupler	98.95	89.95
752-GC100DSI	European type "U" stout coupler	98.95	89.95

NOTE: Twin Probe Products CANNOT Be Returned For Credit

We Buy and Sell Used Picnic Pumps



Rod and Faucet Kits

Rod & Faucet Kits

Includes knob, faucet, rod, beer coupler, washers, clamps, air hose, double gauge regulator, 5 lbs CO2 tank and instructions. Other kits available.

#RAF-C240 US Sankey Rod & Kit With 5 lbs. CO2 Tank
 1-5 \$143.95 6-UP \$139.95

#RAF-C240-LC US Sankey Rod & Kit Less CO2 Tank
 1-5 \$103.95 6-UP \$99.95

Gas Tank Stands



- ✓ Wall mount or free standing
- ✓ Wide base provides stability, prevents tanks from being knocked over
- ✓ Removable dual-position handle

#C-920 Holds 5 lb. steel or aluminum tank \$35.95
#C-940 Holds 10 lb. or 15 lb. steel or aluminum tank \$36.95

Keg Coupler and Faucet Repair Kits



#RK-LT18 Repair kit for Tap-Rite and generic lever type US Sankey coupler \$8.55



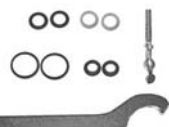
#RK-GMP-2-PB Repair kit for new style Nads Tap-Rite CH5000 Series GMP-2-PB (Draught Tech, NADS, Grundy and MicroMatic style) US Sankey coupler \$8.55



#RK-FT86P Repair kit for Tap-Rite and generic wing handle US Sankey couplers \$8.55



#RK-LH20 Repair kit for LH20 Banner lever handle US Sankey couplers \$8.95



#RK-660B Faucet repair kit with diagram \$4.95

#RK-2600G-PK Repair kit for Perlick keg couplers \$9.45



#CKW-100 Conversion Kit Repair Kit
 Contains most of the items to make general repairs to a home refrigerator kit. Includes 4 separate faucet head washers, one #26N nylon washer, one 74TRQ regulator quad ring, two #24R rubber washers, one #GR-107 check valve, one #23 check valve, one #108 body seal and two #WD-5 screw clamps. The only kit on this page that also includes parts box. \$8.95

New! #234LTSP-RK100 Picnic Pump Repair Kit
 Contains all washers and "O" rings for either LTP or SP model pump couplers: 1-#FT-103 Probe Seal, 1-#108 Body Seal, 3-#FT-101 & 3-#FT-102 internal "O" rings; Also contains all washers and "O" rings to repair metal pumps: 1-#OS-235R "O" Ring, 1-#753 Bottom Washer, & 1-#23 Check Valve. \$3.45



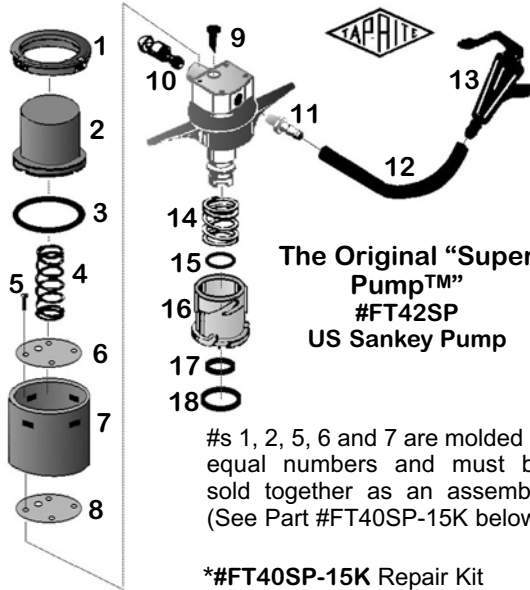
Super Pump™

#FT42SP US Sankey pump with line and faucet
1-11 12-23 24-UP
\$33.95 \$30.95 \$29.50

NEW! #FT88-P
Polymer plastic molded wing handle only (not shown)
\$3.25



#RRRT-1285



The Original "Super Pump™" #FT42SP US Sankey Pump

#s 1, 2, 5, 6 and 7 are molded in equal numbers and must be sold together as an assembly (See Part #FT40SP-15K below)

*#FT40SP-15K Repair Kit
Includes items 1, 2, 3, 4, 5, 6, 7, 9, 17, 18 & instructions \$7.95

New! Super Pumps now feature a tougher, stronger plastic wing handle which resists cracking or breaking.

No.	Part#	Description	1-24	25-UP
1	FT40-6	Cap	see #FT40SP-15K*	
2	FT40-5N	Plunger	see #FT40SP-15K*	
3	FT40-11	Quad ring	\$.85	\$.75
4	FT40-9N	Spring	.95	.85
5	FT40-10	Screw(4 needed)	see #FT40SP-15K*	
6	FT40-8-1	Inside plate	see #FT40SP-15K*	
7	FT40-7N	Pump body	see #FT40SP-15K*	
8	FT40-8	Plate	1.80	1.15
9	FT40-4	Duck bill	1.45	1.25
10	FT-115	Relief assembly	4.95	N/A
11	1778-2P	Nipple	1.85	1.55
12	600B	3/16" black hose(per ft)	See Pg 28	
13	303A	Plastic faucet	2.35	1.95
14	FT-98	Spring	1.15	1.05
15	FT-102	Body "O" ring	.59	.39
16	FT40-1	Body	Not Available	
17	FT-103	Probe washer	.59	.49
17	104	European probe washer	1.40	1.20
18	108	Body washer	.85	.75

#RRRT-1285 Handle retaining clip tool. Both removes and resets handle retaining rings in super pumps, and several other pump and CO2 wing handle couplers. \$18.95

#FT85-112 Retaining Clip for Super Pumps and other wing handle pump and CO2 couplers (not shown) \$.95

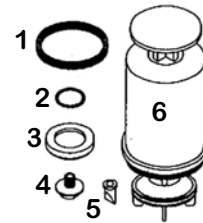
Perlick Piston Party Pumps



- ✓ Each pump is individually pressure checked by factory for ability to create and retain pressure
- ✓ Palm-sized handle allows pumping of more air with less effort
- ✓ All metal coupler
- ✓ Individually boxed
- ✓ Convenient vent button helps control foaming
- ✓ Includes 2 foot vinyl hose with nylon faucet
- ✓ Easily disassembled for cleaning

In Stock for Quick Shipping!

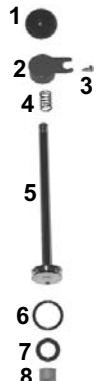
Part#	Description	1-11	12-UP
40000B-PK	US Sankey Piston Party Pump	\$45.95	\$40.95



Piston Party Pump Replacement Parts

Item	Part#	Description	Cost
1	43437-1-PK	Quad ring	\$2.15
2	32697-1-PK	Probe O-ring	.75
3	108	Bottom seal washer	.85
4	32689-1-PK	Probe tip	3.25
5	32699-1-PK	Check valve	1.85
6	40098-PK	Cylinder & piston for piston & bellows pumps	13.25

Parts for discontinued short and tall metal pump with aluminum shaft and flat plastic top cap/clip



Parts for #SPHP-600 Metal Pump (approx. 1 1/8" ID)

No.	Part#	Description	Cost
1	1300R	Round knob	\$1.85
2	HP-108-6	Top cap	1.40
3	FS-019	Cap screw	.15
4	HP-106	Spring	.70
5	HP600-PR	7" rod & plunger	3.50
6	FG-600	O-ring	.85
7	753	Bottom washer	.25
8	23	Check valve	.30

Parts for discontinued short plastic pump



No.	Part#	Description	Cost
1	MP9	Cap	\$1.98
2	MP10	Piston	2.95
3	MP11	"O" ring	.55
4	MP12	Spring	.95
5	MP13	Barrel	3.95
6	753	Bottom washer	.25
7	23	Thomas valve	.30

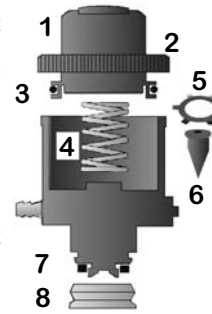
The Original Pony Pump™



	1-11	12-23	in stock case(24)	drop ship case(24)*
	\$17.95ea.	\$16.95ea.	\$15.95ea.	\$15.00ea.

* "drop ship" cases are shipped directly from the factory in Texas

#POP-1 Compact and inexpensive. Fits all US Sankey kegs. Easy to install. Pressure release vent prevents over-pumping. Packaging and instructions make this pump great for retail.



Pony Pump Parts

No. Part#	Description	1-24	25-UP
1 24235	Plunger	\$3.55	\$3.05
2 24222	Locking ring	1.95	1.60
3 70507	Plunger "O" ring	.95	.85
4 24227	Plunger spring	.95	.85
5 PP663	Star washer	.95	.75
6 FT40-4	Duck bill	1.45	1.25
7 24236	Probe seal	.79	.49
8 70192	Bottom seal	2.25	1.95
9 430-TOOL	Star washer tool	.95	N/A
N/A PP659	Relief ass'y	3.95	N/A

The Original Bronco Pump™

Bronco Pump™



Developed as a "commercial" product, the Bronco Pump is made to stand up to the rigors of retail lending, rental and deposit programs.

Part#	Description	1-11	2-23	in stock case(24)	drop ship case(24)*
BRP-1	US Sankey	\$33.95ea.	\$31.95ea.	\$28.95ea.	\$27.95ea.
BRP-EUR	Euro Sankey	37.95ea.	34.95ea.	32.75ea.	30.95ea.

* "drop ship" cases are shipped directly from the factory in Texas

Serve Up to 4 Beers from One Keg at the Same Time.

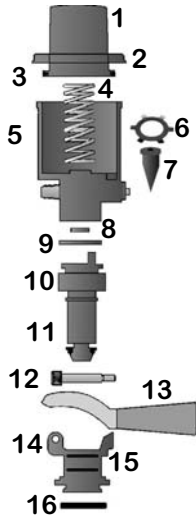


#BRP-4 & #BRP-EUR-4

- ✓Increases Beer Flow Up to 300%
- ✓Reduces lines and waiting.
- ✓Tested to deliver over 45 ounces of beer in 10 seconds (requires 28 pumps of air within that time to achieve this rate)

With just 14 pumps of air and two faucets open it will deliver over 29 ounces in 10 seconds.

Bronco Pump Parts



No. Part#	Description	1-24	25-UP
1 24235	Plunger	\$3.55	\$3.05
2 24222	Locking ring	1.95	1.60
3 70507	Plunger "O" ring	.95	.85
4 24227	Plunger spring	.95	.85
5 70249-01	Body only(Plastic)	8.95	N/A
6 PP663	Star washer (ck)	.95	.75
7 FT40-4	Duck bill (ck)	1.45	1.25
8 70510-01	Beer seal	.69	.59
9 70227-01	Air seal	.79	.69
10 70220-02	Coupling nut	2.95	1.95
11 70217-02	Probe assembly	10.95	N/A
12 70219-02	Hinge pin	1.95	N/A
13 70250-01	Handle assembly	9.85	N/A
14 70216-02	Coupler body-metal	9.50	N/A
15 FT-102	Body "O" ring	.59	.39
16 108	Body washer	.85	.75
N/A PP659	Relief ass'y	3.95	N/A
N/A PP686	Roll Pin Probe/pump	.55	.45



#BRP-4 Four Product U.S. Sankey Bronco Pump

1-5 6-UP
\$61.95 \$55.95

#BRP-EUR-4 Four Product European Sankey Pump

1-5 6-UP
\$64.95 \$61.95

Beer Ball Pumps



#PP701

Easy to use: Beer Ball Pumps CANNOT Be Returned For Credit

- ✓Individually boxed with instructions for tapping and cleaning.
- ✓Includes 18" hose, plastic faucet and stainless steel product tube
- ✓No springs, washers or moving parts to replace.

	1-11	12-49	50-99	100-UP
	\$11.95	\$11.25	\$10.50	\$9.80

NOTE: Quantities of 100-UP shipped directly from factory



Parts for discontinued tall plastic pumps



No. Part#	Description	Cost
1 ABS-1	Pump knob for ABS-8	\$4.50
2 ABS-2	1 pc. S/S rod&piston as'y for ABS-8	5.95
3 ABS-3	1 pc. nylon cap w/clip for ABS-8	3.55
4 ABS-4	Stainless steel spring	1.95
5 ABS-5	"O" ring for ABS-8 & PSP-3	.85
5 ABS-6	S/S screw (2 needed) for ABS-8&PSP-3	.30
7 753	Bottom washer for ABS-8&PSP-3	.25
8 23	Thomas valve for ABS-8&PSP-3	.30

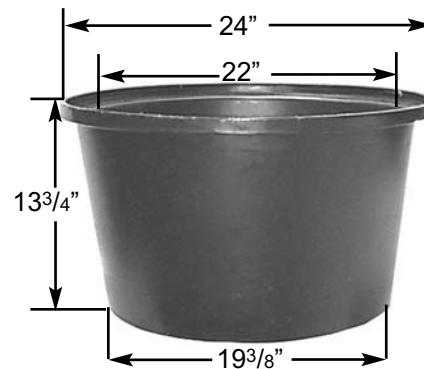
Ice Master Party Tubs

Designed to hold both Sankey and Barrel Type 1/2 or 1/4 kegs

- ✓ Unlike multipurpose tubs, these tubs were designed to hold kegs and ice. Flat bottom holds plenty of ice where it counts (draft beer is drawn from the bottom of the keg).
- ✓ High density polyethylene is a strong, slightly more flexible plastic that resists cracking.
- ✓ Stackable and available in red or blue or black.
- ✓ 1 1/4" beveled rim at top of tub gives support and acts as a great carrying handle.

#KPT-1R Red Tub
#KPT-1B Blue Tub
#KPT-1BK Black Tub

1-7 \$23.50 each 8-23 \$22.50 each 24-UP \$21.80 each



Ships 8 to a Case



MAXIMIZE Ice Sales! MINIMIZE Foamy Beer!

Insulated Rotocast Coolers

- ✓ Fully insulated heavy-duty polyethylene containers.
- ✓ Choice of color: Red, Blue, Black, Green or Brown. Please specify when ordering.
- ✓ Two year limited manufacturer's warranty (FOB factory IA).
Picnic Pumps NOT Included (See Pages 2-8)

Easy to Convert CO2 Dispensers (See Tower Conversion Kit on Page 12)

Super Cooler I

- ✓ Cools 1/4 or 1/2 kegs or 168 twelve oz. cans or bottles
- ✓ Holds 3 bags of ice, keeps cold 48 hrs.
- ✓ Durable recessed handles for easy transport
- ✓ Includes lid that reverses to accommodate different keg sizes
- ✓ 26" diameter x 30" high
- ✓ Ship weight 33 lbs., UPS shippable



#RM-SC1 Super Cooler I
\$184.95

#RM-SCD Dolly sold separately. Swivel casters, ship weight 17 lbs. \$65.95



Super Cooler II

- ✓ Cools 1/4 or 1/2 kegs or 96 twelve oz. cans or bottles
- ✓ Adjustable lid to accommodate different keg sizes
- ✓ 21 1/2" diameter x 16 1/2" high without keg, height adjusts to 17" or 23"

✓ Ship weight 33 lbs., UPS shippable

#RM-SC2 Super Cooler II
\$169.95



- ✓ Insulated Keg Jacket with 5 1/2" slot for easy pump tapping
- ✓ Fits Sankey or Barrel type 1/2 kegs
- ✓ Lightweight and washable - Stays dry!
- ✓ 13 oz. red vinyl performs better than canvas!
- ✓ Rip resistant
- ✓ Rot and mildew resistant
- ✓ Antifungal and anti-bacterial
- ✓ No minimum order
#KC-100-RV

LOW Price!

1-9 \$29.75 10-19 \$27.65 20-UP \$26.85

Bag Ice Yourself and Save!

Have your employees bag the ice at an average cost of 12 to 18 cents per bag. Turn "down time" into dollars! EZ Ice Bagger sets on edge of ice machine.



Also available with staples for sealing bags. Call for details.

Bags without weights printed on them can be sold without weighing. Check local codes.

Model#	Description	Cost
B-28KIT1	EZ Ice Bagger and 250 (8 lb.) bags	\$169.95
B-28KIT2	EZ Ice Bagger, 250 (8 lb.) bags, tape dispenser & roll of tape	179.95
BG-8	1000 bags (8 lb.)	78.55
BG-10	1000 bags (10 lb.)	89.95
BG-20	500 bags (20 lb.)	89.95



Great for picnic pumps, cold plate and coil coolers, bars, beer trailers and more! Just fill with solution, tap coupler into container top as you would a keg, apply pump or CO2 pressure and solution is forced through the lines and taps. Then rinse the same way. Also allows you to tell how well a pump is pumping during the process of cleaning.

Cleaning Container Kits

15 Litre Container Kit

Attach keg coupler or picnic pump directly to cleaning bottle.

#PCC-US132-15

US Sankey Cleaning Kit, includes bottle, cap and dip tube. Bottle has 15 litre/3.96 gallon capacity.

\$124.95

Part#	Bottle Caps Description	Cost
PBC-EUR	Euro.Sankey	\$49.95
PBC-UEC	Guinness	49.95
PBC-GS	Ger.Slider	49.95
PBC-GR	Bass	49.95
PBC-TP	Twin Probe	49.95
PBC-US	US Sankey	49.95
PRV-REP	Replacement PRV	14.95
PBC-SEAL	Cap seal flat "O" ring	3.95

Double Container Kits

Part# Description Cost
DC-1000 Two Sankey (US & Euro) \$199.95

Single Container Kits

SC-1000 Sankey (US & Euro) 94.50

Container Parts

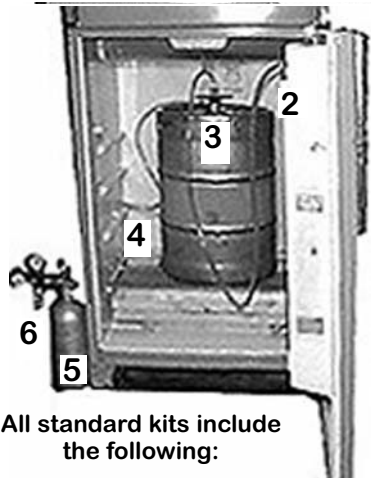
CK-100 Container only 44.95
CK-200 Sankey cap only (US&Euro) 68.95
CK-400 carrier only 49.50
CK-500 Large bottom cap "O" ring 2.95

Double Container Kits include 2 one-gallon containers with handles, 2 container caps with Sankey type adapters, and heavy duty wire carrier as shown.

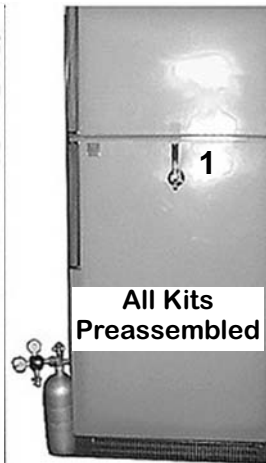
Single Container Kits include 1 one-gallon container with handle and 1 container cap with Sankey type adapter.



Standard Refrigerator Conversion Kits



All standard kits include the following:



- 1 Faucet with black knob, shank & washer
- 2 6 ft. beer line jumper with connectors and washers

- 3 Appropriate keg coupler
- 4 5 ft. air line with clamps
- 5 Double gauge regulator with shut-off

- 6 5 lb. CO2 tank, flat-bottomed (see table on opposite page), shipped empty
- Complete installation instructions

Convert A Refrigerator Into A Beer Dispenser!

Model#	Description	1-5	6-11	12-UP
C240-4	US Sankey kit w/4 lb. CO2 tank	\$141.95	\$137.95	\$134.95
C240	US Sankey kit w/reconditioned tank Our Most Popular Kit!!	149.95	144.95	139.95
C240-10	US Sankey kit w/10 lb. recond. tank	157.95	141.95	139.95
C240-NS	US Sankey kit w/new tank	154.95	149.95	147.95
C540	Euro. Sankey kit w/reconditioned tank	150.95	145.95	140.95
C540-NS	Euro. Sankey kit w/new tank	155.95	150.95	148.95

Craft Brewer's Favorite!! #SS-C240 US Sankey Kit
All parts that come in contact with beer are stainless steel!
Includes standard components plus stainless steel options (#525SS-PK, #SS-1367B, #SS-723, #CH5000-SS)

\$186.95

Component #1



#1301
Black Knob
2⁵/₈" tall
\$1.75



#1360 1³/₄" wide black shank washer. Acts as a lock washer to prevent shank from turning.
\$.95



#664B
Chrome Faucet Head
\$13.25



Optional **#525SS-PK**
Perlick stainless steel sanitary beer faucet
\$23.95



#1366B 5" Shank
Assembled with coupling nut, sleeve, snap ring and flanged lock nut. Fits up to 3¹/₂" thick refrigerator door or wall. Longer and shorter sizes available \$14.95
Optional **#SS-1367B**
6" all stainless steel shank assembly
\$21.95

Component #2



#723 Jumper
6 feet of clear 3³/₁₆" ID beer line, nipples, hex nuts, clamps and rubber washers.
\$8.10

Optional **#SS-723**
Same as #723 with stainless steel tail pieces
\$10.95

Component #3 Keg Coupler Fit 1/6, 1/4, 1/2 Kegs (See Page 5 for list to match brand beers with right keg coupler)



Standard with **#C240** Kit
#CH5000-45
Lever Handle US Sankey coupler
\$24.75



Optional **#CH5000-SS**
US Sankey coupler with stainless steel probe may be substituted at additional cost
\$30.95

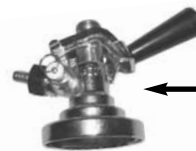


Optional **#770**
Twin Probe coupler with S/S probes
\$44.95

Twin Probe Products **CANNOT** Be Returned For Credit
Reconditioned Hoff-Stevens Couplers Available at Half Price!
Call for Details



Standard with **#C540** Kit
#CH5001 European Lever Handle Sankey coupler
\$25.75



Optional **#BC-100DSI**
European type "G" specialty coupler for Bass and more.
\$52.95

See Page 13 for European Stout Refrigerator Conversion Kits, which require mixed gas (N₂ and CO₂)

European Specialty Couplers for CO₂ driven beers may be substituted or added at additional cost



Optional **#DS-100DSI**
European type "A" slider coupler for Warsteiner and more.
\$52.95

Component #4



#603-60
Air Line with Clamps
5 feet of clear 5¹/₁₆" ID air line (fits air nipple on keg coupler and shut-off on regulator). Clamps included.
\$4.65

Component #5



#742-26NSA Tap-Rite Double Gauge Regulator (Standard)
Two gauges allow readings of both pressure to the beer and to the CO₂ tank. Regulator has Brass forged body with new anti-corrosive heavy duty plastic top bonnet with large "snap-out" to adjust and "snap-in" to lock adjustment dial.
\$38.95
#742-QRSA Tap-Rite Double Regulator (Optional) with grey metal bonnet, adjusting screw and Quad-Ring Seal.
\$42.95

Component #6



Standard with conversion kit: **#5CO2RS** Reconditioned 5 lb. CO2 tank or **#5CO2NS** New 5 lb. CO2 tank (all tanks ship empty). Other size tanks may be substituted at different cost. All tanks listed have a flat bottom and are to be used upright (holding strap recommended). **Reconditioned vs. New Tanks:** Both tanks have been fully tested, have new valves and are certified ready for service. Check with your local filling agency to see if they will fill your tank while you wait, or exchange a filled tank. In the latter case, there is no advantage in buying a new tank.

Part#	Description	1/2 Kegs	Appx. OD	Hgt	Wgt	1-9	10-UP
4CO2RS	4 lb. CO2 tank, recond. steel	4-6	4 1/2"	21 3/4"	9.2 lbs	\$44.00	\$39.00
5CO2RS	5 lb. CO2 tank, recond. steel	6-8	5 1/2"	18"	11.5 lbs	53.50	48.50
5CO2NS	5 lb. CO2 tank, new steel	6-8	5 1/2"	18"	11.5 lbs	64.00	59.00
5CO2RA	5 lb. CO2 tank, recond. alum.	6-8	5"	19 1/2"	8.5 lbs	55.50	50.50
10CO2RS	10 lb. CO2 tank, recond. steel	13-18	6 3/4"	22 1/4"	23.5 lbs	58.50	53.50
10CO2RA	10 lb. CO2 tank, recond. alum.	13-18	6 1/2"	23 3/4"	19.5 lbs	59.50	54.50
15CO2RS	15 lb. CO2 tank, recond. steel	22-27	6 3/4"	27 1/4"	27.5 lbs	74.00	69.00
15CO2RA	15 lb. CO2 tank, recond. alum.	22-27	6 3/4"	27 1/4"	22.5 lbs	76.00	71.00
20CO2RS	20 lb. CO2 tank, recond. steel	30-35	7 3/4"	29 1/2"	33.5 lbs	92.00	87.00
20CO2RA¹	20 lb. CO2 tank, recond. alum.	30-35	7 3/4"	29 1/2"	27.5 lbs	95.00	90.00
50CO2RS²	50 lb. CO2 tank, recond. steel	80-85	9"	55"	114.5 lbs	³	³

#5CO2RS

¹20 lb. aluminum tank includes black carry handle.

²50 lb. steel tank includes metal neck ring and cap.

³Call for current availability, pricing and shipping charges.

Drip Trays

NOT Included With Standard Conversion Kits

**See Pages 12 & 13 for Conversion Kit Accessories
SEE PAGE 12 FOR CLEANING KITS AS LOW AS \$19.95!**



5 3/4" x 5 3/4" x 2 3/8" black plastic lift-out drip tray with chrome grill and stainless steel mounting bracket.

#WMPDT-552
1-5 **\$20.95** 6-UP **\$18.95**



High impact lift-out black plastic molded tray, 10 3/8"W x 6 1/4"D x 2 1/8"H. S/S mounting bracket, plastic splash grid (screws not included).

#1525NS
1-5 **\$11.95** 6-UP **\$9.95**



Stainless steel with mounting screw holes (screws not included). 6 1/8"W x 4 3/4"D x 5 1/4"H. Includes plastic grid. No drain shank, must be lifted up and removed to be emptied.

#1525C
1-5 **\$42.95** 6-UP **\$40.95**



Stainless steel. Hole drilled, easy to insert faucet & shank. 6 1/8"W x 4 3/4"D x 10 3/4"H. Includes plastic splash grid, 2" x 1/2" MPT drain shank.

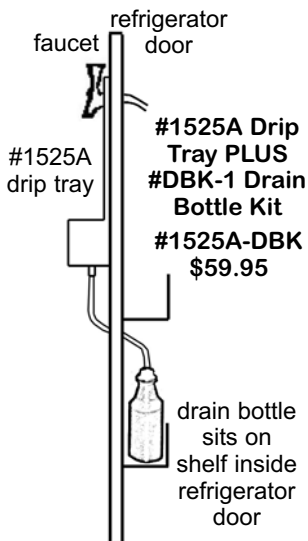
#1525A
1-5 **\$53.95** 6-UP **\$48.95**



Drain Bottle Kit For use with #1525A drain tray

Female adapter threads on drain shank. 2' hose goes through refrigerator wall or door where 1 qt. drain bottle collects drippings. Includes clamp to secure hose.

#DBK-1
1-5 **\$10.50** 6-UP **\$9.25**



PARTIAL Refrigerator Conversion Kits

Partial Kits Less CO2 Tank (Suffix -LC)

Includes knob, faucet, shank, beer hose, fittings, air hose, #T742-26NSA double gauge regulator and instructions.



#C240-LC US Sankey Partial Kit Less CO2 Tank **\$98.95**

#C540-LC European Sankey Partial Kit Less CO2 Tank **\$100.95**

Partial Kits Less CO2 Tank And Regulator (Suffix -LCR)

Includes knob, faucet, shank, beer hose, fittings, air hose, and instructions.



#C240-LCR US Sankey Partial Kit Less CO2 Tank and Regulator **\$64.95**

#C540-LCR European Sankey Partial Kit Less CO2 Tank and Regulator **\$65.95**



#MPK-1 Leave your faucet, shank and jumper line at home in your refrigerator. Use this plastic faucet, 5 ft. of beer line and fitting assembly with the rest of your kit to a special event and put your beer on ice. Beer will stay fresher, longer.

1-5 **\$5.45** 6-UP **\$4.95**

Economy Cleaning Kits



#EDCK-2
Complete economy
kit with instructions
1-5 6-UP
\$23.95 \$19.95

A 2 Quart Cleaning kit for as little as \$19.95!!!

#EDCK-2 Components:

Part #	Description	Cost
CJ-100	2 qt. plastic jar/pump assy	\$15.95
1350C	Economy faucet wrench	1.80
1329	Faucet brush	1.95
BLC-04	4 oz. bottle liquid cleaner	1.99
85-117	Backflush ball lifter	2.25

Great For Home
Kits!

#EDCK-32

Same as #EDCK-2 Cleaning Kit plus
#904A 4ft. ³/₁₆" hose brush and
#BLC-32 32 oz. bottle liquid beer
line cleaner instead of 4 oz. bottle.

1-5 6-UP
\$31.95 \$28.95

Economy pump is not only powerful, it pumps with a vacuum and can hold liquid in the line so chemical can have more contact time for better cleaning.

Deluxe Cleaning Kits

#1841 One qt. Direct Draw Kit. Same as above but with 1 qt. jar. Components listed in chart at right.

1-11 12-UP
\$39.95 \$37.95

Part #	Description	Cost
DBF-1	Draft beer fact book	\$2.95
904A	4 ft. ³ / ₁₆ " hose brush	3.95
BLC-04	4 oz. liquid cleaner	2.55
MP16	Maxi plastic pump	7.25
1941-5	Cap gasket	1.65
603	⁵ / ₁₆ " tubing	.85
753	Bottom washer	.25
254	Straight cleaning attach't	5.15
1350	Faucet wrench	2.95
1329	Faucet brush	2.05
85-117	Backflush ball lifter	2.25



B*L*C
Liquid
Beer
Line
Cleaner
in 32 oz.
Bottle

#BLC-32 \$8.75

See Pages 82-88
for more cleaners
and equipment.

Specialty Conversion Kits



Deluxe Refrigerator Conversion Kits



#C240-DLX

#C240-DLX US Sankey Deluxe Kit
1-5 6-UP
\$209.95 \$199.95

Deluxe Conversion Kits include all the standard items listed on the previous two pages PLUS the following:

- ✓New 5 lb. CO2 Tank
- ✓#742HP-QRSA Regulator
- ✓#RW-1 Regulator Wrench
- ✓#EDCK-2 Economy Cleaning Kit
- ✓#1525NS Drip Tray

As Low As
\$199.95

As with all our conversion kits, the Deluxe Kits are fully assembled, include instructions and substitutions or additions can easily be made (simply add or subtract cost difference for your choices).

#CWMA-KIT

CO2 Wall Mount
Adapter

S/S ¹/₄" male flare on each end. Fits walls ⁵/₈" to ²³/₁₆" thick. Includes ⁷/₁₆" OD stainless steel shank (³/₂" long), lock nuts, rubber and fiber washers, ¹/₄" flare washers, ¹/₄" nuts x ⁵/₁₆" barb S/S swivel hose stems. Helps prevent cold air from escaping from refrigerator. \$11.95

Economy Conversion Kits



#C240-ECO
keg not included

#C240-ECO US Sankey Economy Kit
1-5 6-UP
\$111.95 \$105.95

Kit includes basic items. Great as a start-up kit for refrigerator or as a mobile party kit (with the keg on ice). Refrigerator door must be opened in order to pour.

- Kit comes complete with:
- ✓Hand held black plastic faucet (#MPK-1)
 - ✓Keg coupler & air line (#603-60)
 - ✓Single gauge regulator (#T741HP-26NSA)
 - ✓4 lb. CO2 tank (#4CO2RS), shipped empty
 - ✓Fully assembled with washers, clamps and instructions

Conversion Kits With Towers



#C240-TOW See Pages 52-56 for Towers and Drip Trays

Model#	Description	1-5	6-UP
C240-TOW	US Sankey kit w/chrome tower	\$189.95	\$185.95
C540-TOW	Euro. Sankey kit w/chrome tower	190.95	186.95
C240-TOW-B	US Sankey kit w/brass tower	199.95	195.95
C540-TOW-B	Euro. Sankey kit w/brass tower	200.95	196.95
C240-TOW-LC	US Sankey kit w/chrome tower, no tank	139.95	135.95
C540-TOW-LC	Euro. Sankey kit w/chrome tower, no tank	140.95	136.95
C240-TOWB-LC	US Sankey kit w/brass tower, no tank	149.95	145.95
C540-TOWB-LC	Euro. Sankey kit w/brass tower, no tank	150.95	146.95

Double and Triple Tower Kits and Kits with All Stainless Steel Parts Available
Call for Details

European Stout Refrigerator Conversion Kits

Kits provide all parts necessary (except the mixed gas tank - see below) for low carbonated ales and stouts...brands such as Boddington's and Guinness Harp and Stout. Stouts require mixed gas (N₂ and CO₂), a faucet with a restrictor disk and applied pressure of 28 - 32 lbs. Murphy's Irish Stout requires a European Sankey coupler and other varieties such as Caffrey's require a #BC-100DSI bass coupler.

Mixed Gas Tank NOT Included

#ES840-LC Complete kit includes components #1 through #6 listed below with #GC-100DSI European "U" type coupler for Boddington's, Guinness Harp, Guinness Stout brands

1-5 6-UP
\$199.95 \$195.95

#ES940-LC Complete kit includes components #1 through #6 listed below with #GRUR-1 European Sankey coupler for Murphy's Irish Stout









1-5 6-UP
\$171.95 \$167.95


#CES840-LCR Partial kit used to convert standard conversion kit to accept European specialty brands. Includes one #SFSSB-1 stout faucet, one #GC-100DSI "U" type coupler, one #CTN-180 CO₂ to N₂ adapter. Does NOT include regulator, air line, beer line assembly, shank, black knob or mixed gas tank

1-5 6-UP
\$127.95 \$124.95

#CES940-LCR Partial kit same as above except with #CH5100 European Sankey coupler

1-5 6-UP
\$99.95 \$96.95


<p>Component #1</p>  <p>#1301 Black Knob 2⁵/₈" tall \$1.75</p>  <p>#1366B Shank Assembled with coupling nut, sleeve, snap ring and flanged lock nut. Fits up to 3¹/₂" thick refrigerator door or wall. Longer and shorter sizes available. \$14.75</p>  <p>#SFSSB-1 Chrome Stout Faucet Head Gives beer a creamy head. \$69.95</p> <p>Optional #SFBB-1 Brass Stout Faucet Head Must be specified at time of order. \$69.95</p>	<p>Component #2</p>  <p>#723 Jumper 6 ft. of clear 3¹⁶" ID beer line (required for proper restriction balance), nipples, hex nuts, clamps and rubber washers. \$8.15</p>	<p>Component #3</p>  <p>Standard with #ES840-LC Kit #GC-100DSI European "U" type coupler for Boddington's, Guinness Harp, Guinness Stout brands \$52.95</p> <p>Standard with #ES940-LC Kits #CH50001 (not shown) European Sankey coupler for Murphy's Irish Stout \$25.75</p>	<p>Component #4</p>  <p>#603-60 Air Line with Clamps 5 ft. of clear 5¹⁶" ID air line (fits air nipple on keg coupler and shut-off on regulator). Clamps included \$4.65</p>
<p>Component #5</p>  <p>Standard with #ES840-LC and #ES940-LC Kits #T742-N Tap Rite Double Gauge Nitrogen Regulator Features "O" ring seal on inlet nipple that helps prevent costly leaks. Great for premixed N₂/CO₂ tanks. \$44.95</p>	<p>Component #6</p>  <p>Standard with #ES840-LC and #ES940-LC Kits #NTC-806 Nitrogen Regulator to CO₂ Tank Adapter Converts a nitrogen regulator to use with a CO₂ valve. Allows kit to be used with a mixed gas tank with either valve on top. \$11.95</p>	<p>NOTE: Stout style mixed gas is made up of more nitrogen (75%) than CO₂ (25%), so nitrogen valves (#CGA-580) are used by most suppliers. For this reason, a nitrogen regulator and a nitrogen to CO₂ adapter are included to cover all possibilities. Check what is used by your local supplier. You can then specify the correct regulator and save the cost of the adapter. If mixed gas is used with a #CGA-320 CO₂ valve, you may specify a #742HP CO₂ regulator at \$36.95 instead of components #5 and #6 and save \$14.45.</p>	



Standard with partial conversion kits #CES840-LCR and #CES940-LCR
#CTN-180 CO₂ to N₂ Adapter
Adapts standard CO₂ regulator to nitrogen valve \$11.95

Mixed Gas Tank Sold Separately NOT Included In Above Kits

Cut-away view showing siphon tube to insure proper mixture of 75% N₂ + 25% CO₂



#55NC-580RS
55 cu.ft. tank

Part#	Part #	Description	Capacity (cu ft)	Service Rating	Appx # 1/2Kegs	Appx OD	Appx Hgt w/valve	Appx Wgt (empty)	1-9	10-UP
20NC-580NS	20NC-320NS	New steel	20	2015	3-4	5 ¹ / ₄ "	18"	11.5 lb	\$79.95	\$72.95
60NC-580NS	60NC-320NS	New steel	60	2015	7-10	6 ³ / ₄ "	27 ¹ / ₄ "	27.5 lb	99.00	92.00
60NC-580RA	60NC-320RS	Recond. steel	60	1800	6-9	7 ³ / ₄ "	29 ¹ / ₂ "	27.5 lb	89.00	82.00
*228NC-580RS	228NC-320RS	Recond. steel	228	2015	28-32	9"	55"	114.5 lb	*	*

w/Nitrogen valve and siphon tube. Our most popular mixed gas tank

*228NC tanks include neck and ring cap. Call for availability, pricing and shipping charges. Siphon down tubes may be special ordered at a different length/depth. Nitrogen valves are used by most suppliers, as the mixed gas is made up of more N₂ than CO₂. Both the size (cu.ft. capacity) and the service rating determine the volume of gas that can be compressed in a tank. This differs from CO₂, where tank capacity is based on pounds.

**Cold Plates or Coil Coolers?
How to Choose the Proper
Cooler**

Cold Plate Coolers work best when the keg temperature can be kept colder than 55°F. Beer is flash chilled and can be dispensed in high volumes between 36° and 38°F.

Coil Box Coolers are more effective when the keg temperature is 55° to 70°F. Beer can be dispensed at about 40° to 45°F.

**Single Product Coil Coolers
Blue 52 Qt. Cooler with Hinged
Lid and Drain**



#CD5201-120 Best Seller!
Single Product Coil Box with 100' of 3/8" S/S coil and 20' of 1/4" S/S coil. Each coil is triple stacked (**NOT stacked side-by-side**).

1-3 4-UP
\$215.95 \$205.95

**Beer Hardware NOT
Included**
Coolers require
Regulator Kits (See
Page 17) and Keg
Couplers
(See Pages 18-20)

Coil Box Coolers

**Include Faucets,Knobs, Shanks,Cooler
Couplings,Ferrules, Grommets, Hex Nuts
and Beverage Grade Stainless Steel that
is coiled and triple stacked.**

**Double Product Coil Coolers
Blue 52 Qt. Cooler with Hinged Lid and
Drain**



**Shown with
Optional
#SS-57212-PG
Stainless Steel
Drain Catch Tray
with Plastic Grid.**
Measures 21"W x
6 1/4"D x 2 1/2"H.
Empties by hand.
\$19.95

**#CD5202-120
Best Seller!**

Double Product Coil Box with 100' of 3/8" S/S coil and 20' of 1/4" S/S coil per faucet. Each coil is triple stacked.

1-3 4-UP
\$429.95 \$419.95



**Beer Line Jumpers
#602-48H 4 ft. jumper
assembly NOT included
with boxes**

Clear 3/8" tubing with hex nuts (wing nuts available at added cost), 3/8" nipples, clamps and rubber washers. Black 3/8" tubing available.

Part#	Length	Cost
602-36H	3 ft.	\$7.70
602-48H	4 ft.	8.00
602-60H	5 ft.	8.30
602-72H	6 ft.	8.65

**Double & Triple Product Coil Coolers
White 80 Qt. Cooler with Hinged Lid and
Drain**



#CD4803-3120

Triple Product Coil Box with 100' of 3/8" S/S coil and 20' of 1/4" S/S coil per faucet. Each coil is triple stacked. Large 80 qt. cooler gives ample room for more ice/water, ideal for warmer climates.

\$629.95

**Custom Coolers Available!
Call for Pricing**

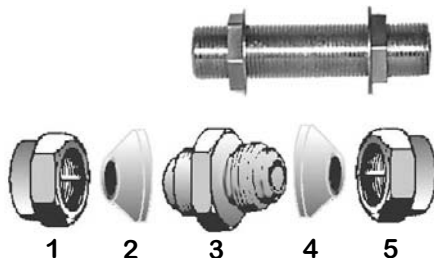
Coil-Type Dispensers
require a combination of
about half ice and half water
required for full contact to
coils to maximize cooling
efficiency!!



**Stainless Steel
Tubing**

Part#	Description	Cost
585	1/4" OD S/S tubing	*
586	5/16" OD S/S tubing	*
587	3/8" OD S/S tubing	*

*Call for current market pricing

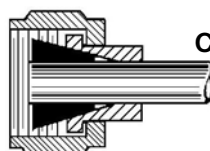


S/S Flare Fittings(great for repair)

No.	Part#	Description	Cost
1	S61-4	1/4" S/S flare nut	\$2.40
1	S61-5	5/16" S/S flare nut	2.40
2	NYFW-4	1/4" nylon washer	.12
2	NYFW-5	5/16" nylon washer	.14
3	S82-46	1/4" x 3/8" union	4.85
3	S82-56	5/16" x 3/8" union	4.85
4	NYFW-6	3/8" nylon washer	.16
5	S61-6	3/8" S/S flare nut	2.50

Cooler Couplings

#219A-3	3/8" bore 3" long	\$10.25
#219A-4	3/8" bore 4" long	10.95
#219B	1/4" bore 3" long	12.95



**Compression
Fittings**

Ferrules (#785F shown)

Part#	Description	Cost
785F	for 1/4" OD	\$2.95
786F	for 5/16" OD	2.95
787F	for 3/8" OD	2.95

Grommets (#786G shown)

785G	for 1/4" OD	1.20
786G	for 3/8" OD	1.20



**#PVC-1 1" ID x 15/16" OD x 1" long PVC
spacer. Gives support to shank in coolers.
Other lengths/sizes available.....\$.95**



**#1360 Black shank washer, 1/4"
thick for sealing and tightening
shanks and cooler couplings.\$.95**